

FOR YOUR NEEDS



LUBRICATION SYSTEM FOR SINGLE-LINE

2025 V1.0
LUBRICATION SYSTEM
FOR
SINGLE-LINE

烟台西索润滑技术有限公司
YANTAI CISOLUBE CO.LTD
ADD: 山东省烟台市高新区博斯纳路41号 WEB:WWW.CISOLUBE.COM
TEL:+86 400-800-9400



CISO Lube[®]
LUBRICATION SYSTEM

COMPANY PROFILES

Yantai CISO Lubrication Technology Co., Ltd. is a high-tech enterprise specializing in R&D, production and sales of centralized lubrication systems and hydraulic equipment. The centralized lubrication systems produced by our company have the characteristics of high stability, strong reliability, good sealing, and high output pressure. The products and services currently have covered petrochemical, wind power generation, construction machinery, agricultural machinery, rail transit, medicine and other industries, and it is a leading solution provider in the industry.

The company adheres to the concept of "integrity-based, quality first, and continuous innovation" to provide customers with A+ ideal solutions to meet the different needs of customers. Through years of research and development and production practice, from product design to accessories selection, product assembly, finished product testing and sales services, to ensure product quality.



CISOLUBE CATALOG

2025

www.cisolube.com

CONTENTS

CONTENTS

目录

Single line lubrication system description	1
--	---

P U M P

C-FLOW electric pump	5
GTS lubrication pump	12

V A L V E S

VL-1 Metering valve	21
VL-1X Metering valve	24
VL-1XL Metering valve	27
VL-11 Metering valve	30
VL-32 Metering valve	32

C O N T R O L L E R S

MC-III	34
MC-II-A	35

A C C E S S O R I E S

Lubrication accessories	36
-------------------------------	----

Single line lubrication system

1. Application:

The single line lubrication system is the most widely spread total loss lubrication system in the general engineering field.

Small quantities of oil or fluid grease are fed intermittently in the desired cycle time of the lubrication point. Example 5 to 1000 mm³ dosing volume, to 25 bar pressure at lubrication point, for a pump pressure of 25 to 80 bar.

Special features:

- Supply to numerous lubrication points
- Flexible construction
- Exact dosing
- Easy expansion
- Point-target type of spraying possible, e.g. chain bolt lubrication

2. Mode of operation of the Ciso system :

The pump sucks the lubricant from the container. The lubricant reaches the main line, distributor strips and the dosing valves through the relief valve. For every pressure build-up controlled by the pressure control valve, the dosing valves deliver the lubricant to the lubrication point via the lubrication line. In an automatically operated system, the pressure build-up is controlled by a max. pressure switch and the electronics. The pump is switched-off after the pressure build-up and again switched-on after the end of the cycle time. Pressure build-up from the unit up to the farthest metering valve requires a specific time depending upon the length of the line and flowability of the lubricant.

A level control monitors the constant level of the lubricant in the container. By stopping the pump, the entire system is relieved using the relief valve at ca. 1 bar. This is important for the function of the dosing valve and can be controlled via a min. pressure switch.

3. Design:

The first, determine the lubrication point, lubrication requirements, the lubrication and interval time. When determining the lubrication point requirements, it is best to meet the principle of small dose, short cycle. At the same time, the unloading time of the main road and the unloading time of the flowing grease must be taken into account, because of the temperature and the long pipeline, which leads to extra time. The main line and the dosing valve are laid such that self-venting is possible. On the main line end and higher points of the system, dosing valves must be arranged withoutlets on the top. There

Single line lubrication system

must no air inclusions.

The pipeline resistance of the system must be kept as little as possible so that pressure can build-up quickly at the end of the line. The more viscous the lubricant, the bigger should the line cross section be designed. If the pump delivers a flow rate much more than the system can take, and the pressure switch fails, then the lubricant will be discharged from the unloading valve to avoid damage caused by increasing pump pressure.

Line dimensioning:

Main line:

High pressure resin hose	11X6mm	For main road > 15 m
High pressure resin hose	8.6X4.2mm	For main road > 10 m
Steel pipe	6X1mm 8X1mm	For main road < 10 m
Nylon pipe	6X1.2mm	For main road < 10 m

Lubrication lines:

Nylon pipe	4X0.75mm
metallic pipe	4X0.7mm

Generally, the lines should be kept as short as possible particularly for viscous lubricants. Moreover, individual lubrication lines must not be longer than 3 m.

Pretests on an design true to the original are required for large systems or highly viscous lubricants.

Pressure build-up and relief time must be determined here.

4. Lubricant:

Generally, NLGI000-1 Flowing lubricating grease is used in our lubrication system. However, attention should be paid that these NBR seals are not affected. The function of synthetic lubricants or mineral oils can be checked with aggressive additives, on request. We can provide our customers with in-factory testing of lubricants. If you need special lubricants for system testing, please contact sales staff.

Attention:

Do not possibly mix different lubricants! Ideally, the system must be cleaned.

No way must greases be mixed with non-compatible types of soaps.

5. Assembly:

Cleanliness customary to the hydraulic system must be observed. There should be no impurity iron

Single line lubrication system

filings in the system, especially after pipe cutting!

Refer to the mechanical manual for torque, especially when using copper fittings.

Nylon pipe to be equipped with the corresponding copper bushing.

For numerous lubrication points with smallest dosing quantities for delivering oil and fluid grease.

The Advantages

- Connecting numerous lubrication points
- Smallest dosing quantities
- Compact construction
- For oil or fluid grease
- Cost-effective
- Easy assembly

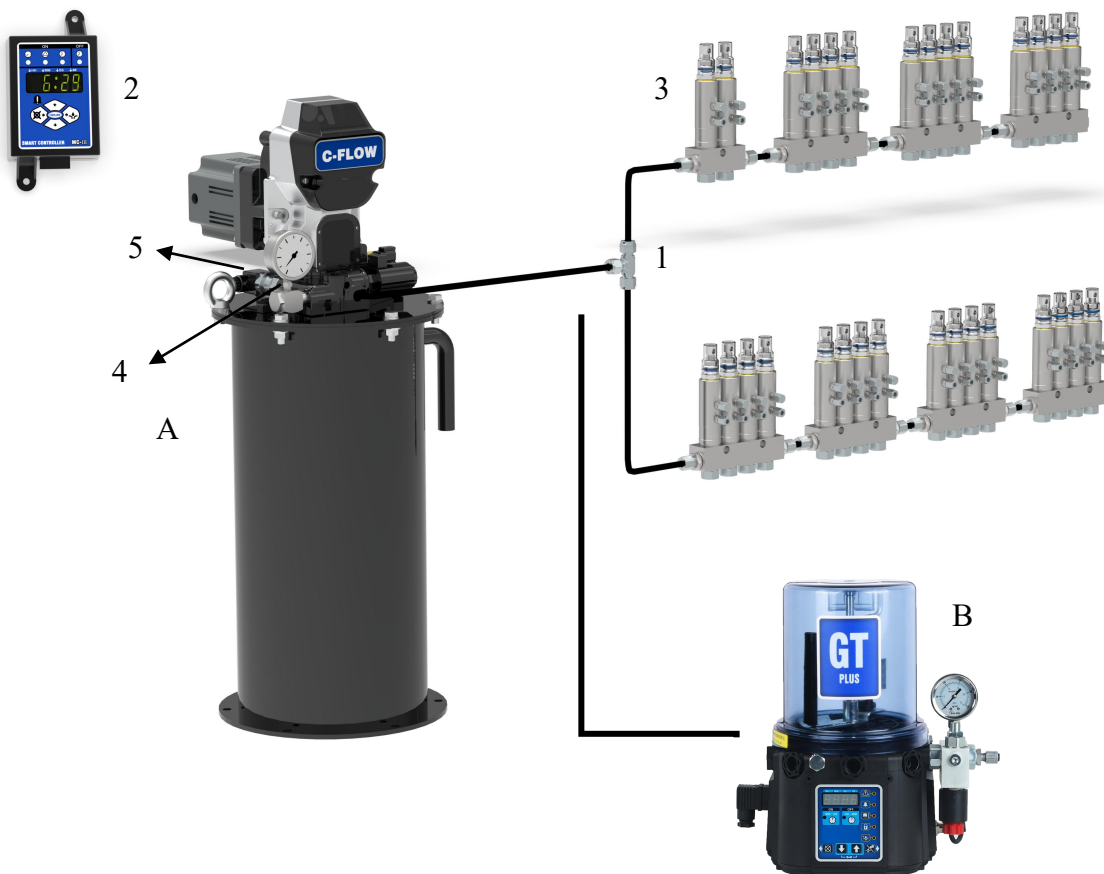
The system components

- Manual, pneumatic and electrical pumps
- Distributor strips
- Dosing valves
- Screwed fittings
- Lines
- Control and check devices

The function

The dosing valves are impinged on the main line with the pump – dynamically operating metering valves with a pressure surge, static operating dosing elements with slow pressure build-up. These thus transfer the respective quantity of the lubricant to the friction point. During the following relief phase, the lubricant is restacked in the dosing valves for the next lubrication process.

Struture diagram



- A — C-FLOW lubrication pump
- B — GTS lubrication pump
- 1 — Tee branching pieces
- 2 — Controller
- 3 — VL Series Metering Valves
- 4 — Pressure gauge
- 5 — Check device (pressure switch)



C-FLOW Lubrication pump

- Pump oil and grease
- Multiple grease filling ways
- Powerful centralized control system
- Multiple voltages available

C-FLOW Electric Pump

C - FLOW is a compact high-performance electric pump, its unique rotary actuation and modular gear set can match various speed. Pump driven by a motor's rotary motion to turn with the reciprocating motion of the pump to provide lubricant flow effectively.

Motor adopts brushless motor, low noise, low maintenance cost, long service life. A pump body strong, durable, large displacement, the characteristics of small size is easy to install. May be extended in the harsh environment engineering and mining machine uptime.

C-FLOW lubrication pump is equipped with two oil outlets, customers can choose to use according to the actual use.



Characteristics

- Metal structure, durable and long-lasting product that reduces machinery downtime for maintenance
- Advanced brushless DC motor
- Can be equipped with pressure and level sensors real-time monitoring

Application

- Construction machinery
- Mining and mineral processing
- Steel mills
- Paper mills
- Food and beverage

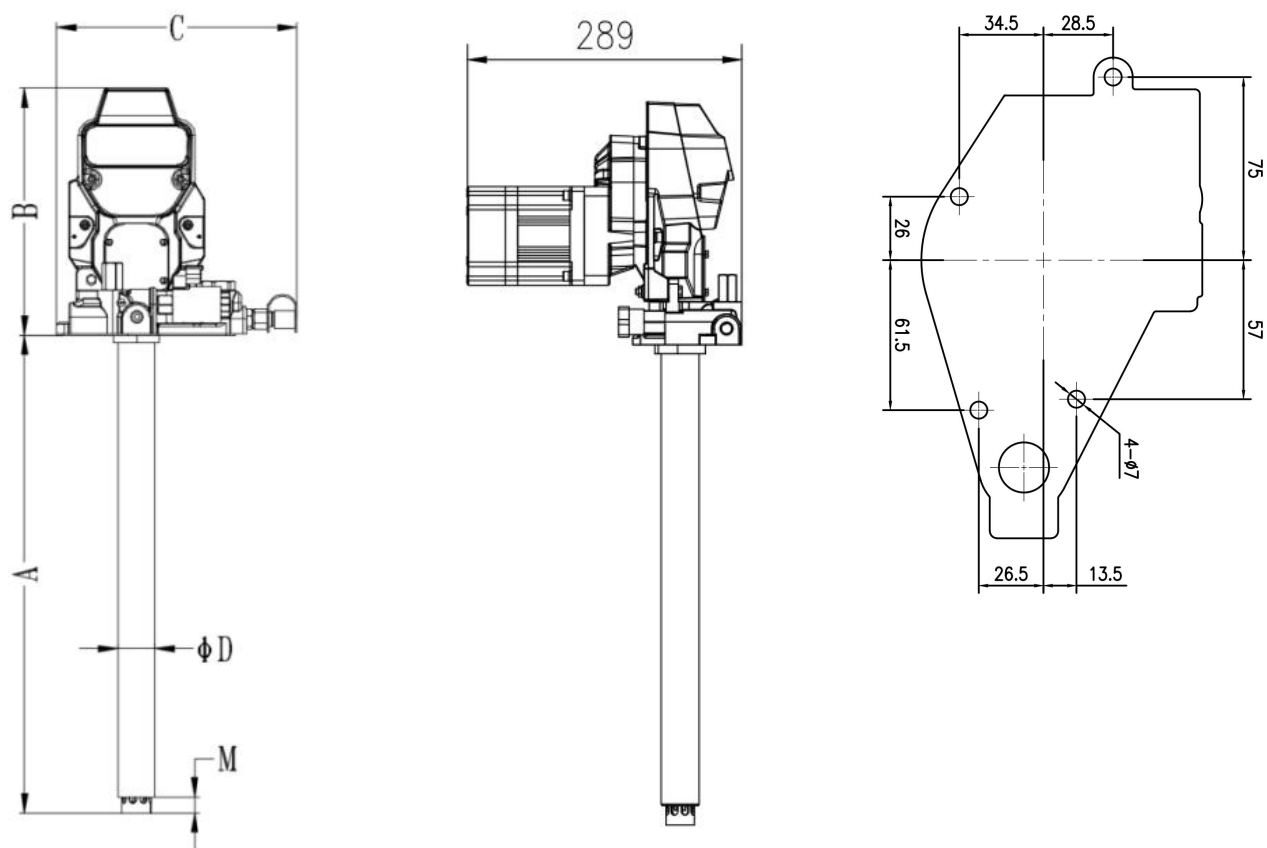
.....

Technical Specifications

Max.Operating pressure	Max. 241Bar
Operating temperature	-40°C ~ 65°C
Voltage	24VDC
Rated current	11.9A
Output rate	Max. 74ml/min
Reservoir	12L (With reservoir) 20L (With reservoir) 35 lb (Without reservoir, use the original lubricant bucket) 27KG (Without reservoir) 41KG (Without reservoir)
Outlets	NPT3/8 or NPT1/4
Relief valve port	1/2" Thread
Inlet port	Push-in fittings
Material	Carbon Steel、 Stainless Steel

Dimensions (mm)

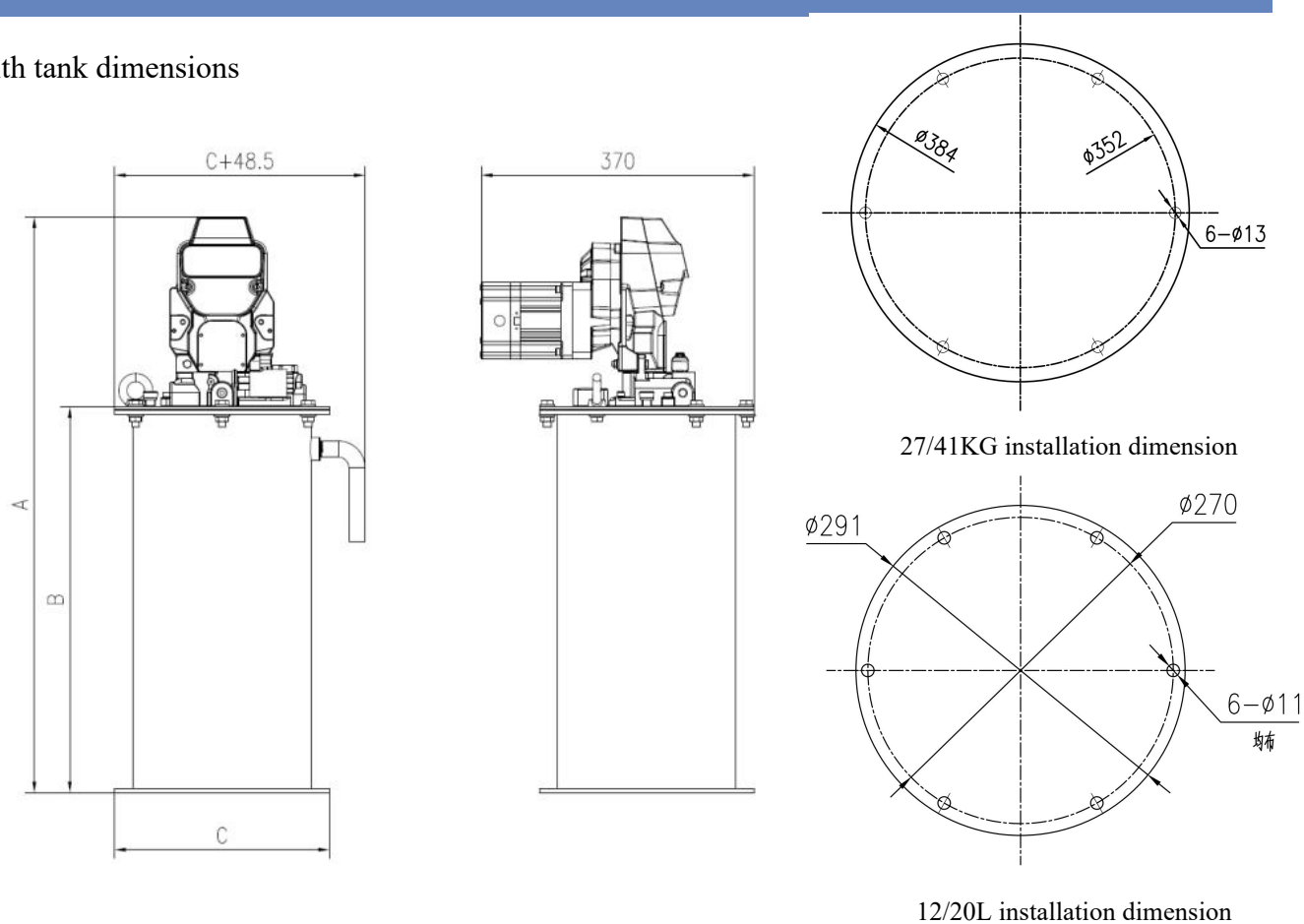
Standalone pump, without oil tank



Reservoir	A	B	C	D	M
12L/35lb	354	257	251	40	20
20L/27KG	500	257	251	40	20
41KG	711	257	251	40	20

Dimensions (mm)

With tank dimensions



Reservoir	A	B	C
12L	630	365	293
20L	781	524	293
27KG	777	519	384
41KG	982	724	384

Ordering Information

C-FLOW-

--	--	--	--

Pump Description

1 = 12L bucket length, 24VDC

2 = 20L bucket length, 24VDC

3 = 35 lb bucket length, 24VDC (Do not mix the bucket, use the oil with the grease)

4 = 27KG bucket length, 24VDC

5 = 41KG bucket length, 24VDC

Metering System Feedback

0 = Series progressive, no vent-valve, no pressure feedback (plugged outlet)

1 = Vent-valve, no pressure feedback (plugged outlet)

2 = Vent-valve, pressure switch (No line)

Reservoir

0 = No reservoir, bare pump

1 = 12L steel reservoir, follower plate

2 = 20L steel reservoir, follower plate

3 = 35 lb plastic bucket kit-cover, follower plate (bucket not included)

4 = 12L steel reservoir, no follower plate

5 = 20L steel reservoir, no follower plate

6 = 27KG steel reservoir, follower plate

7 = 27KG steel reservoir, no follower plate

8 = 41KG steel reservoir, follower plate

9 = 41KG steel reservoir, no follower plate

Reservoir Accessories

0 = No reservoir, bare pump

2 = Level-reporting transducer (Power cord with 2m)

Dimensions (mm)



Pump



Pump and Tank

Ordering information

Tank



Part №	KG	Description
C10101	12L	Tank kits
C10102	20L	Tank kits
C10103	27KG	Tank kits
C10104	41KG	Tank kits

Drum cover is supplied with bolts, vent cap, gasket and eyebolts.

Tank assembly ordering code includes complete drum cover.

Level sensor and follower plate must be ordered separately.

Follower plate kits



Part №	KG
C25115	12L、20L
C25116	27KG、41KG

Level sensor kits



Part №	KG
C25111	12L, with 2M cable
C25112	20L, with 2M cable
C25113	27KG, with 2M cable
C25114	41KG, with 2M cable

Pressure switch



Part №	Measuring range	Description
C25118	50~400bar	No cable

The factory setting is 20Mpa

Grease filling connector



Part №	Description	Thread
80220	Male connector	G1/4
80221	Female connector	G1/4



GTS Lubrication pump

- Pump oil and grease
- Multiple grease filling ways
- Powerful centralized control system
- Multiple voltages available

THE SMALL PUMP PACKAGE WITH BIG FEATURES

GTS pump is a high pressure piston pump, Its design is particularly suitable for single-line systems.

With special materials, to achieve excellent anti-shock ability

Special design of pump make it easy to observe the oil level

and prevent UV radiation, prevent oil deterioration. With low liquid level alarm, flashing buzzer. Also can choose the type of output.

There are two model modes:

Standard: Can be managed by an external PLC. Since it does not come with an internal control unit, this is the most economic solution for lubricating your systems.

Automatic: With integrated control system, which can be set up local running time. Equipped with local operation and alarm light, alarm with buzzer, provide low level and pulse alarm, which can be combined with the monitor of distributor units into a perfect operating system.



Characteristics

- Pump oil and grease
- Reservoirs : 2L、 4L、 6L、 8L
- Voltages : 12VDC、 24VDC、 110VAC、 220VAC
- Multiple grease filling ways
- Powerful centralized control system
- CE Certification
- Design patent
- IP67

Application

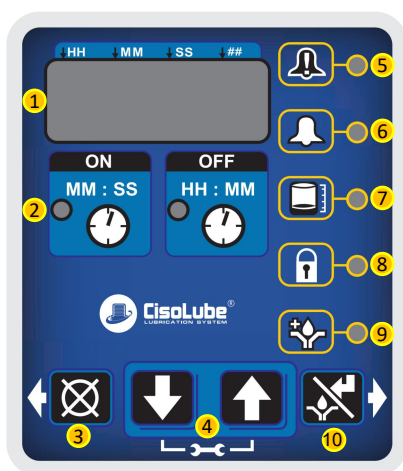
- Heavy VEHICLES
- Heavy industries
- Chain&Gear
- Machine tools
- Mobile plant machine

.....

Technical characteristics

Voltages	12VDC、24VDC、110VAC、220VAC
Unit of pump outlet	1
Outlet thread	G1/4
Output	Max. 15 ml/min (one pump element)
Operating pressure	adjustable from ± 70 to 150bar
Reservoir Capacity	2L、4L、6L、8L
Lubricants	OIL、000、00、0、1
Operating temperatures	-50 - 90°C

Control System:



Basic function

- ① Easy to read LED display
- ② Legible on/off instructions
- ③ Reset function
- ④ Easy to use navigation keys
- ⑤ Alarm signal of lube system shutdown
- ⑥ Warning signal prior to lube system shutdown
- ⑦ Low level indication
- ⑩ Manually run/Confirm

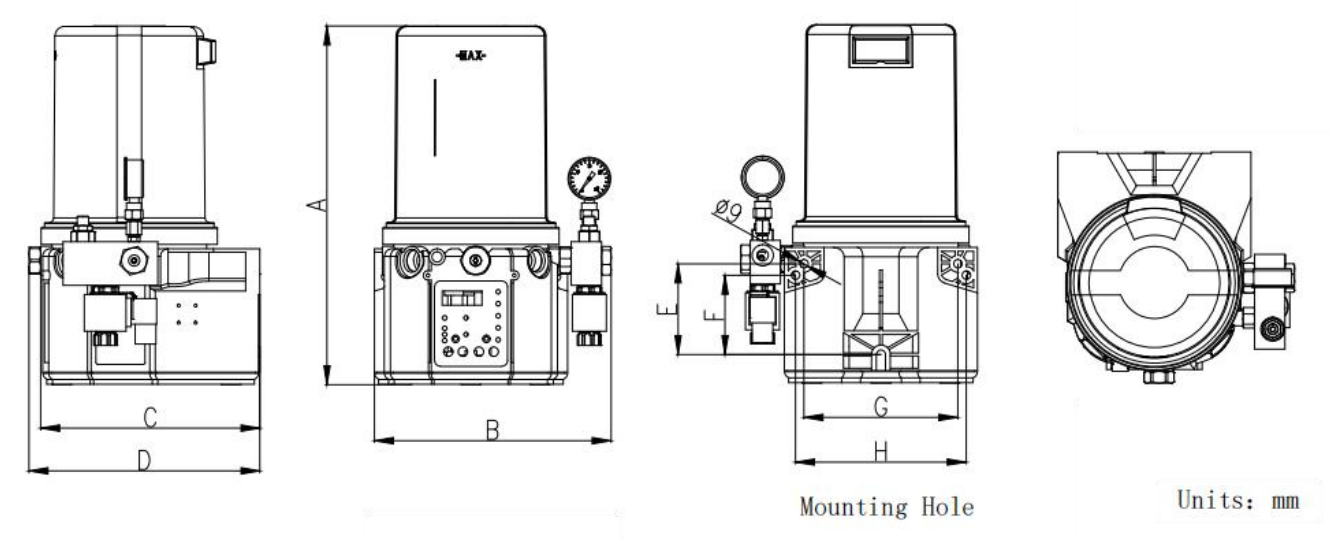
Custom function

- ⑧ Access to the control device is password protected
- ⑨ Pre-lube capability

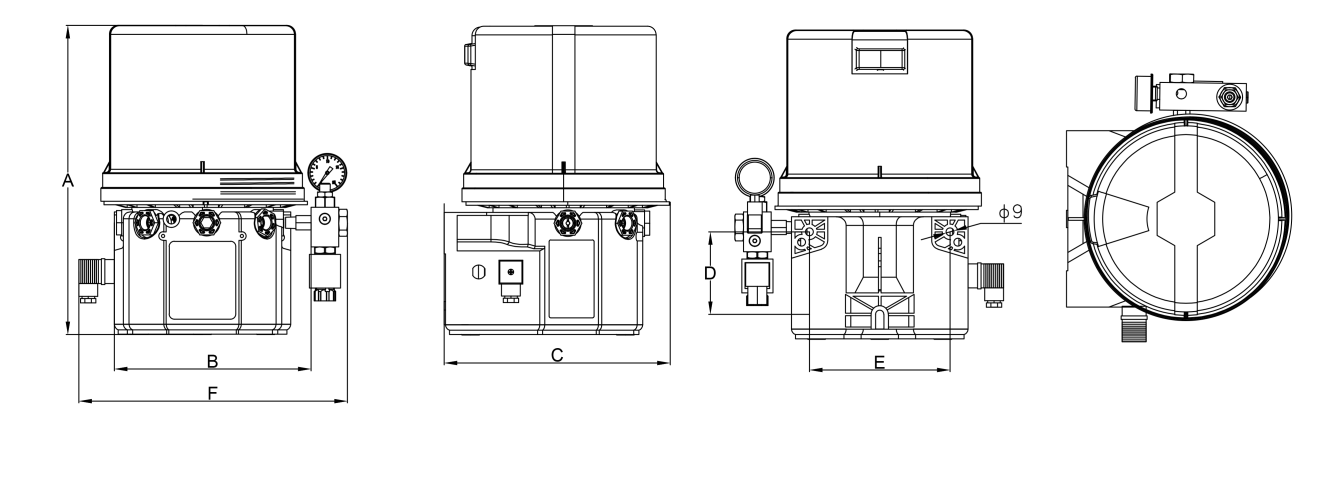
★ For additional customization features, please contact your sales manager.

- Clear panel
- Programs that can be designed
- It can be password protected
- Sound alarm
- Low level alarm
- Accept proximity switch
- Excellent shock resistance
- pre lubrication button

Dimensions :

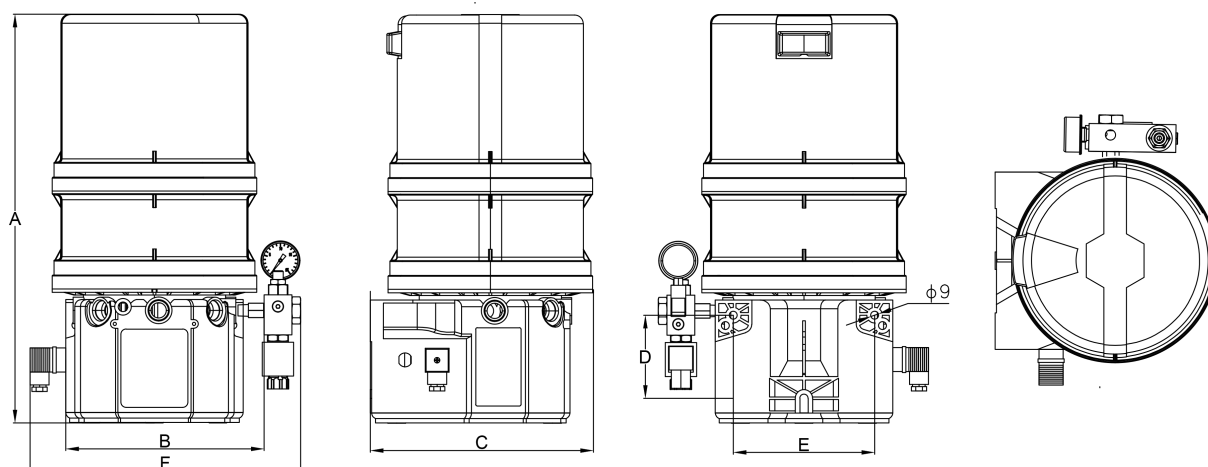


Reservoirs	A	B	C	D	E	F	G	H
2L	338	255	231.5	248	95.5	83.5	162.5	180
4L	378	255	231.5	248	95.5	83.5	162.5	180



Reservoirs	A	B	C	D	E	F
6L	375.5	243	261.2	95.5	162.5	311

Dimensions:



Reservoirs	A	B	C	D	E	F
8L	470	243	261.2	95.5	162.5	311

Top cap:

1. Order the GT pump for the upper grease cover. Please add - B after the standard part number. For example: 20D220-B

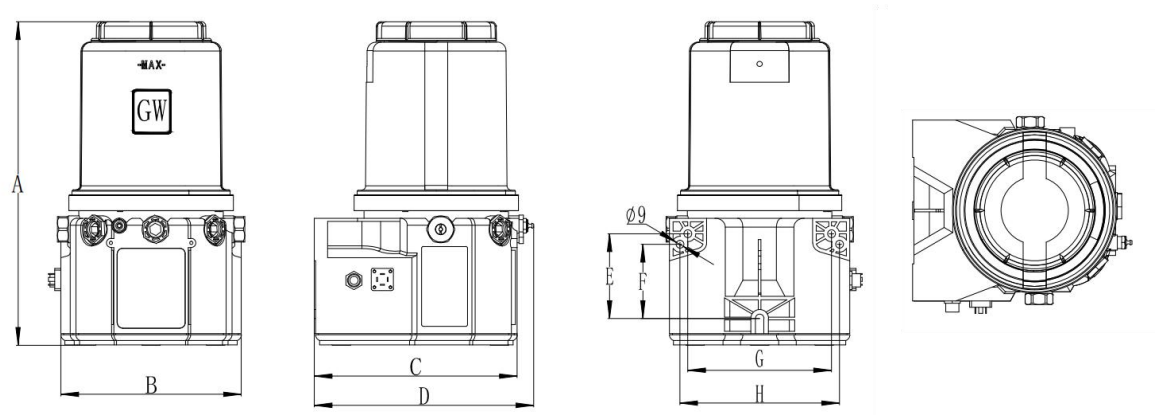


Pump grease, top open cover mode, large diameter injection cap

Applicable: 2L、6L、8L

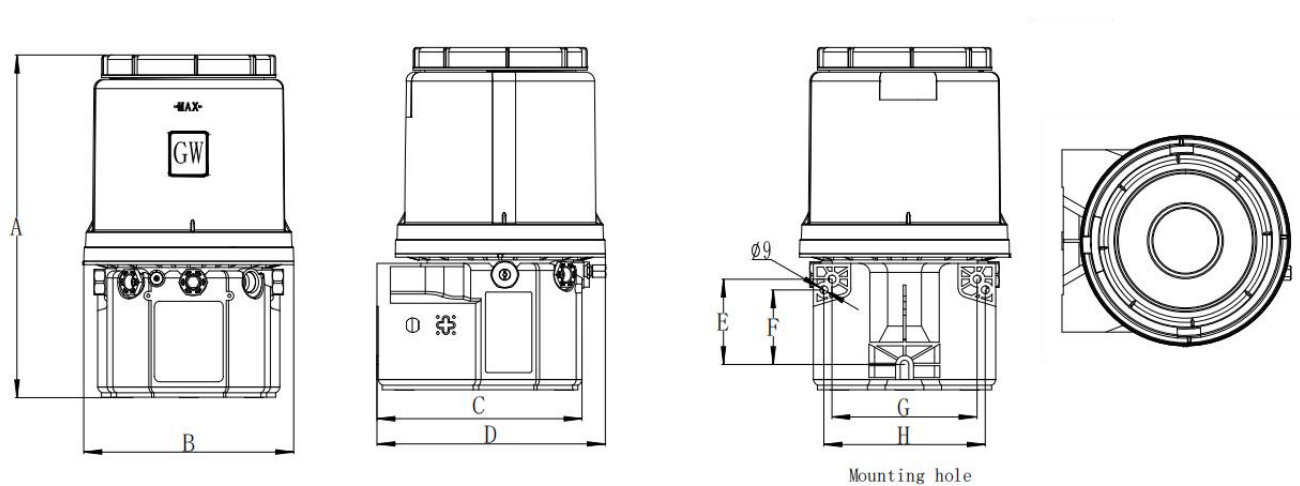
This top cover method is not suitable for 4L tanks

2L Dimensions (mm) :

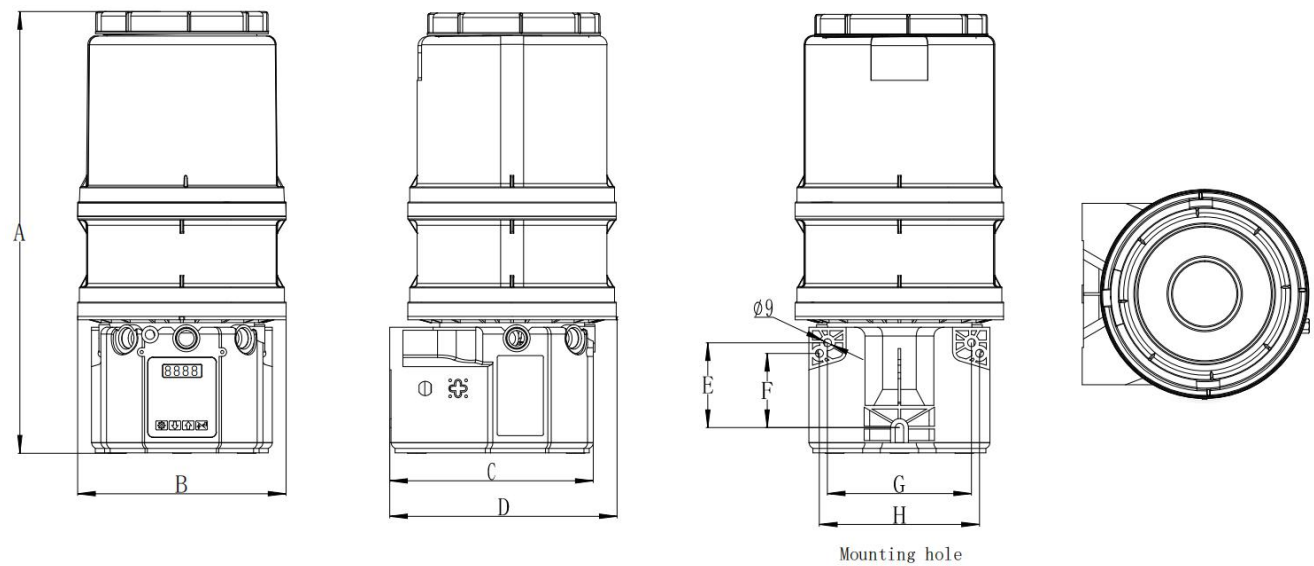


Reservoir	A	B	C	D	E	F	G	H
2L	365	204	231.5	248	95.5	83.5	162.5	180

6L & 8L Dimensions (mm) :



Reservoir	A	B	C	D	E	F	G	H
6L	385	235	231.5	255.5	95.5	83.5	162.5	180

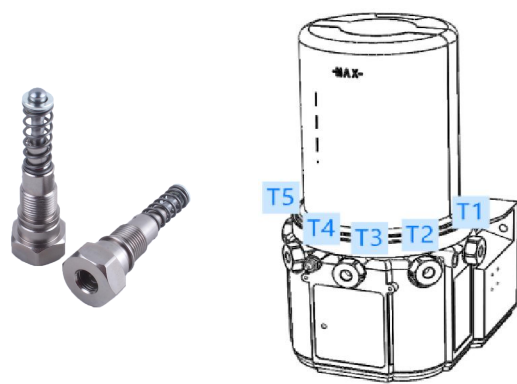


Reservoir	A	B	C	D	E	F	G	H
8L	498	235	231.5	255.5	95.5	83.5	162.5	180

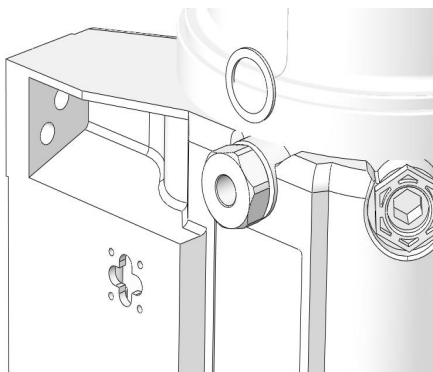
Ordering information:

2. Every factory GT pump is equipped with a pump element at the T1 position. Customers can purchase pump element and install them in positions T2 through T5!

Only suitable for A6, if you choose other pump head, please consult customer service.



3. Displacement can be adjusted by shims. Pump displacement settings can use 0, 1 or 2 spacers. More than 2 spacers are prohibited.

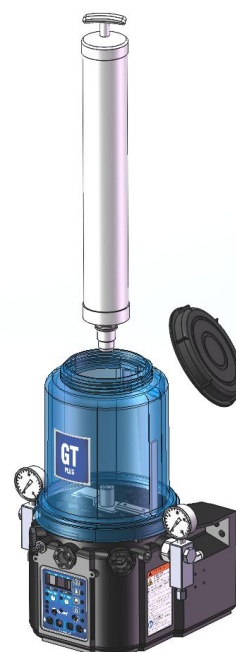
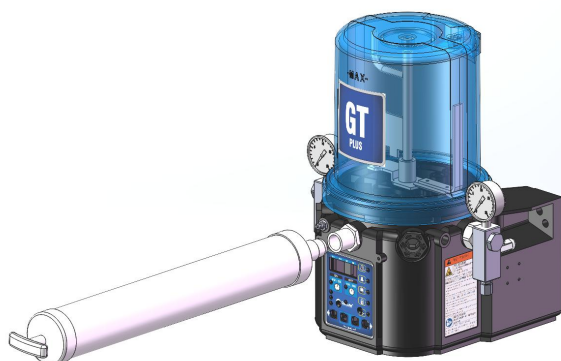


No. Spacers	Output Volume/Minute	
	cubic inches	cubic cm
2	0.12	2
1	0.18	3
0	0.25	4

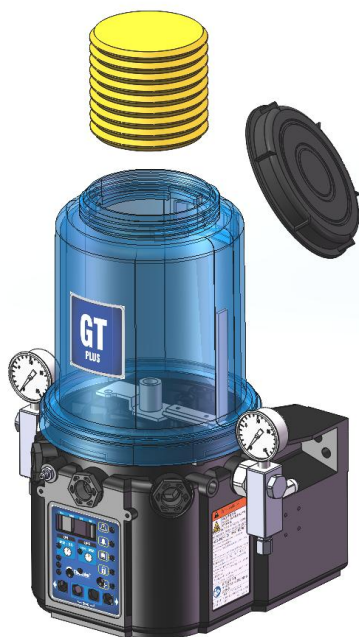
Ordering code: 80535

Fill grease type:

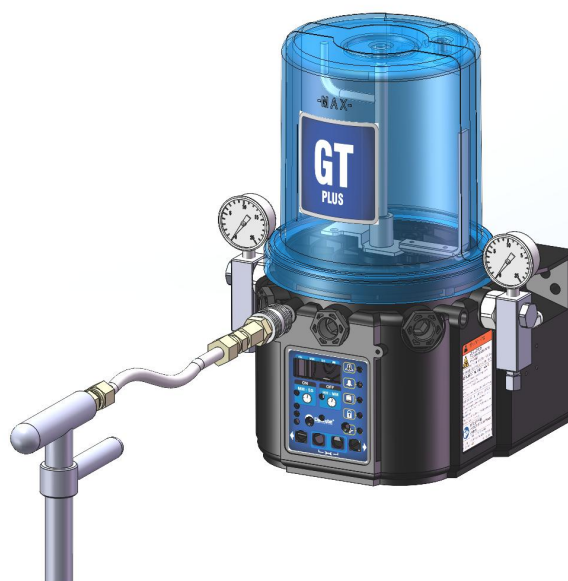
① with grease gun kits



② with cartridge



③ with hand pump



Ordering information:



21-

--	--	--	--	--	--	--	--

Type

D = Stirrer

E = With follower plate

Reservoir

2 = 2L 4 = 4L

6 = 6L 8 = 8L

Voltages

2= 12VDC 4= 24VDC

6= 220V

Timer

1 = With timer

6 = Without timer

Low Level

L = With level

M = Without level

Lubricant

G = Grease

O = Oil

Fill Type

N = Grease Nipples

F = Quick connection

Reservoir Feature

A = Without top cover

B = With top cover



VL-1 Series Metering Valves

- Shipped with manifolds from 1 to 6 ports (lubrication points)
- Metering quantity 0.131 - 1.31 ml /cyc adjustable

VL-1 Series Metering Valves



For use in single-line lubrication systems

The series VL-1 metering devices are for single-line, high-pressure centralized lubrication systems dispensing lubricants compatible with fluoroelastomer packings and viscosity up to NLGI 2. Output is externally adjustable. An indicator pin permits visual check of metering device operation. Individual metering devices can be removed easily for inspection or replacement.

Characteristics

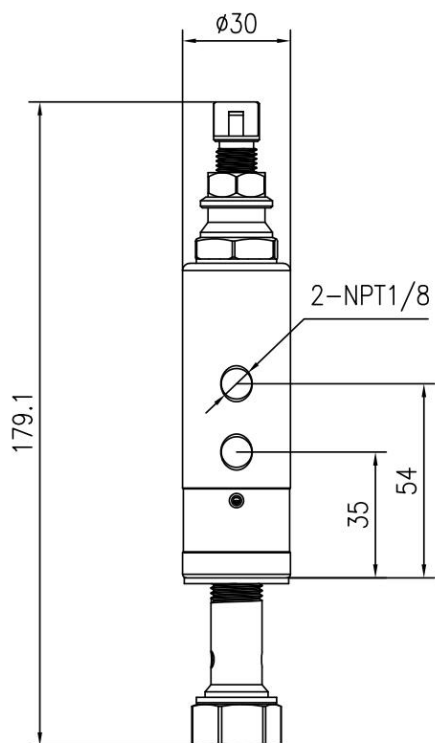
- Shipped with manifolds from 1 to 6 ports (lubrication points)
- Output is externally adjustable
- Each indicator pin permits visual check of injector operation
- Individual metering devices can be removed easily for inspection or replacement

Applications

- Mining and mineral processing
- Construction machinery, steel/heavy industry

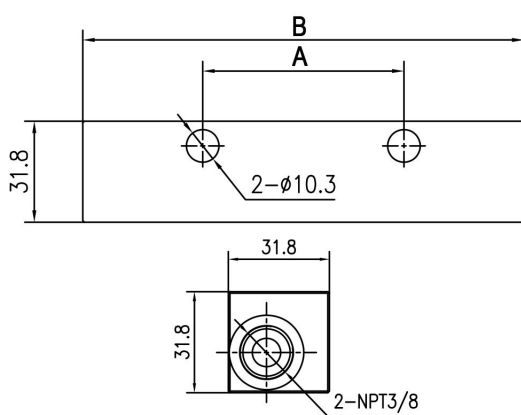
Technical characteristics	
Outlets	1 to 6
Metering quantity	0.131 - 1.31 ml (adjustable)
Lubricant	Grease NLGI 0, 1, 2
Operating temperature	-26 to +176 °C
Operating pressure	128 to 241 bar
Material	Carbon steel
Connection main line	3/8 NPT (F)
Connection outlet	1/8 NPT (F)

Ordering information of single metering valve



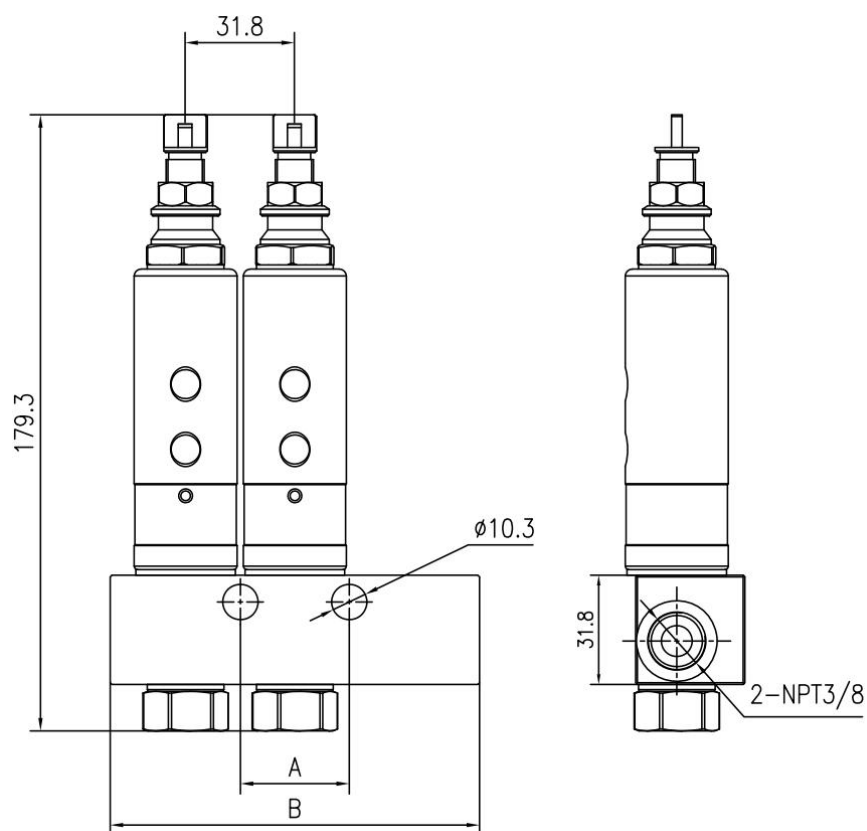
Part number	Connection outlet
VL1000	1/8 NPT (F)

Distributor block:



Part number	Output Number	A/mm	B/mm
DBVL01	1	-	63
DBVL02	2	-	76.4
DBVL03	3	31.7	107.5
DBVL04	4	63.4	139
DBVL05	5	95.1	170.5
DBVL06	6	126.8	202.7

Ordering information of complete set



Part number	Output Number	A/mm	B/mm	Inlet	Outlet
VL110602	1	-	63	3/8 NPT (F)	1/8 NPT (F)
VL120602	2	-	76.4		
VL130602	3	31.7	107.5		
VL140602	4	63.4	139		
VL150602	5	95.1	170.5		
VL160602	6	126.8	202.7		



VL-1X

Series Metering

Valves

- Shipped with manifolds from 1 to 6 ports (lubrication points)
- - Metering quantity
- 0.25 - 1.31 ml /cyc adjustable

VL-1X Series Metering Valves

For use in single-line lubrication systems

The series VL-1X metering devices are for single-line, high-pressure centralized lubrication systems dispensing lubricants compatible with fluoroelastomer packings and viscosity up to NLGI 2. Output is externally adjustable. An indicator pin permits visual check of metering device operation. Individual metering devices can be removed easily for inspection or replacement.

Characteristics

- Shipped with manifolds from 1 to 6 ports (lubrication points)
- Output is externally adjustable
- Each indicator pin permits visual check of injector operation
- Individual metering devices can be removed easily for inspection or replacement

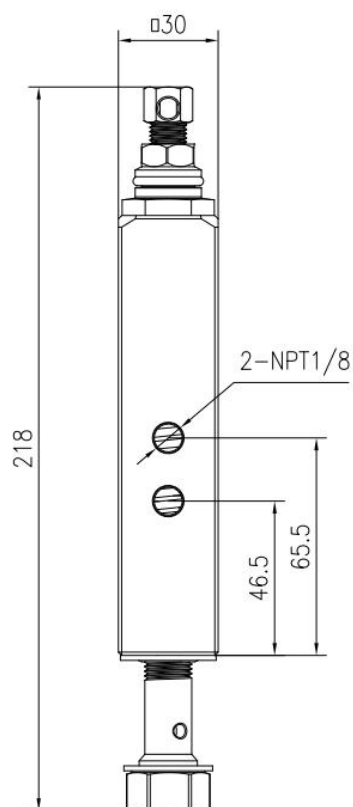
Applications

- Construction machinery
- Mining and mineral processing
- Steel industry



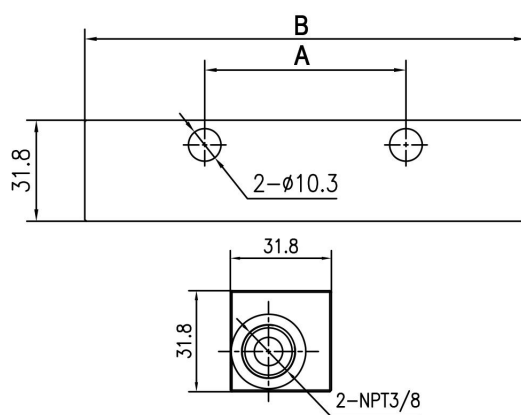
Technical characteristics	
Outlets	1 to 6
Metering quantity	0.25 - 1.31 ml (adjustable)
Lubricant	Grease NLGI 0, 1, 2
Operating temperature	Max. 82 °C
Operating pressure	128 to 241 bar
Material	Carbon steel
Connection main line	3/8 NPT (F)
Connection outlet	1/8 NPT (F)

Ordering information of single metering valve



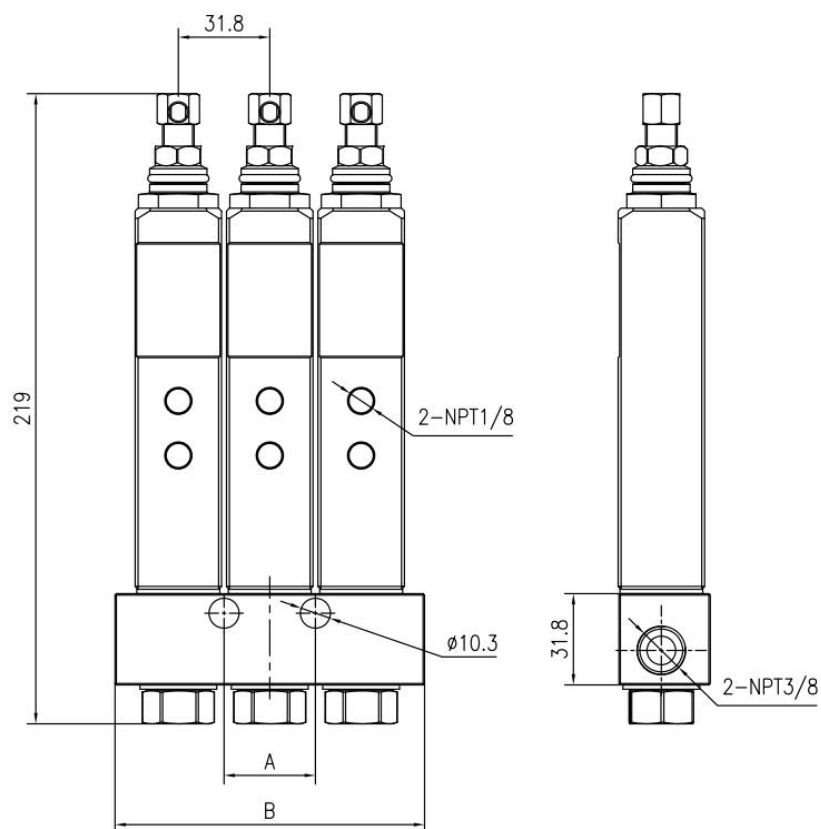
Part number	Connection outlet
VL1X00	1/8 NPT (F)

Distributor block:



Part number	Output Number	A/mm	B/mm
DBVL01	1	-	63
DBVL02	2	-	76.4
DBVL03	3	31.7	107.5
DBVL04	4	63.4	139
DBVL05	5	95.1	170.5
DBVL06	6	126.8	202.7

Ordering information of complete set



Part number	Output Number	A/mm	B/mm	Inlet	Outlet
VL1X01	1	-	63	3/8 NPT (F)	1/8 NPT (F)
VL1X02	2	-	76.4		
VL1X03	3	31.7	107.5		
VL1X04	4	63.4	139		
VL1X05	5	95.1	170.5		
VL1X06	6	126.8	202.7		



VL-1XL

Series Metering Valves

- Shipped with manifolds from 1 to 6 ports (lubrication points)
- Metering quantity 0.57 - 5.00 ml /cyc adjustable

VL-1XL Series Metering Valves

For use in single-line lubrication systems

The series VL-1XL metering devices are for single-line, high-pressure centralized lubrication systems dispensing lubricants compatible with fluoroelastomer packings and viscosity up to NLGI 2. Output is externally adjustable. An indicator pin permits visual check of metering device operation. Individual metering devices can be removed easily for inspection or replacement.

Characteristics

- Shipped with manifolds from 1 to 6 ports (lubrication points)
- Output is externally adjustable
- Each indicator pin permits visual check of injector operation
- Individual metering devices can be removed easily for inspection or replacement

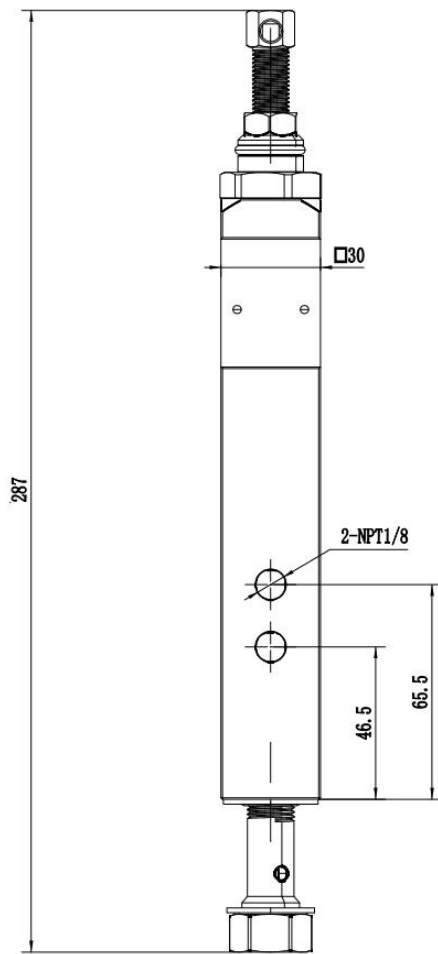
Applications

- Construction machinery
- Mining and mineral processing
- Steel industry



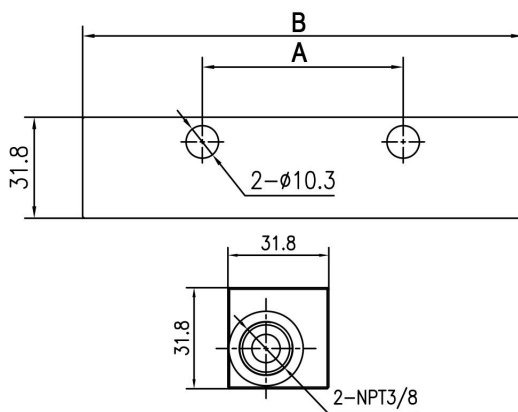
Technical characteristics	
Outlets	1 to 6
Metering quantity	0.57 - 5.00 ml (adjustable)
Lubricant	Grease NLGI 0, 1, 2
Operating temperature	Max. 82 °C
Operating pressure	128 to 414 bar
Material	Carbon steel
Connection main line	3/8 NPT (F)
Connection outlet	1/8 NPT (F)

Ordering information of single metering valve



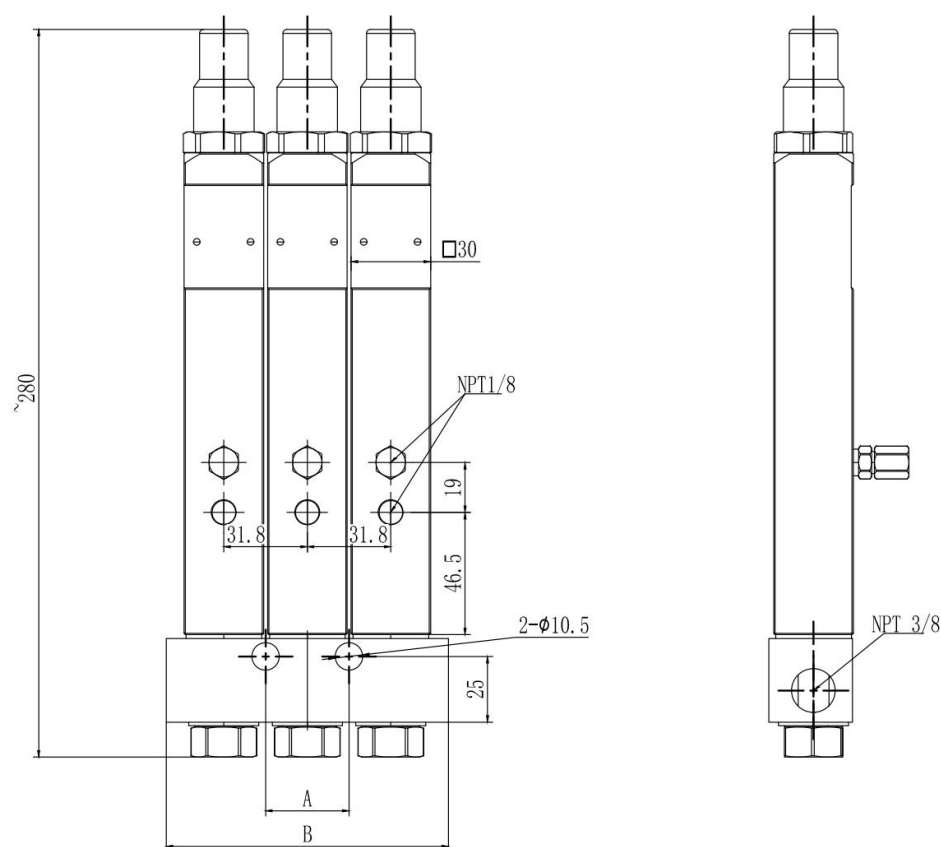
Part number	Connection outlet
1XL000	1/8 NPT (F)

Distributor block:



Part number	Output Number	A/mm	B/mm
DBVL01	1	-	63
DBVL02	2	-	76.4
DBVL03	3	31.7	107.5
DBVL04	4	63.4	139
DBVL05	5	95.1	170.5
DBVL06	6	126.8	202.7

Ordering information of complete set



Part number	Output Number	A/mm	B/mm	Inlet	Outlet
1XL01T	1	-	63	3/8 NPT (F)	1/8 NPT (F)
1XL02T	2	-	76.4		
1XL03T	3	31.7	107.5		
1XL04T	4	63.4	139		
1XL05T	5	95.1	170.5		
1XL06T	6	126.8	202.7		



VL-11

Series Metering Valves

- Individual metering devices can be removed easily for inspection or replacement
- Metering quantity
0.82 - 8.20 ml /cyc adjustable

VL-11 Series Metering Valves

For use in single-line lubrication systems

The series VL-11 metering devices are for single-line, high-pressure lubrication systems. viscosity up to NLGI 2. Output is externally adjustable. An indicator pin permits visual check of metering device operation. Individual metering devices can be removed easily for inspection or replacement.

Characteristics

- May be combined in a circuit of metering devices VL-1、VL-1X、VL-1XL、VL-11、VL-32
- Output is externally adjustable
- Each indicator pin permits visual check of injector operation
- Individual metering devices can be removed easily for inspection or replacement

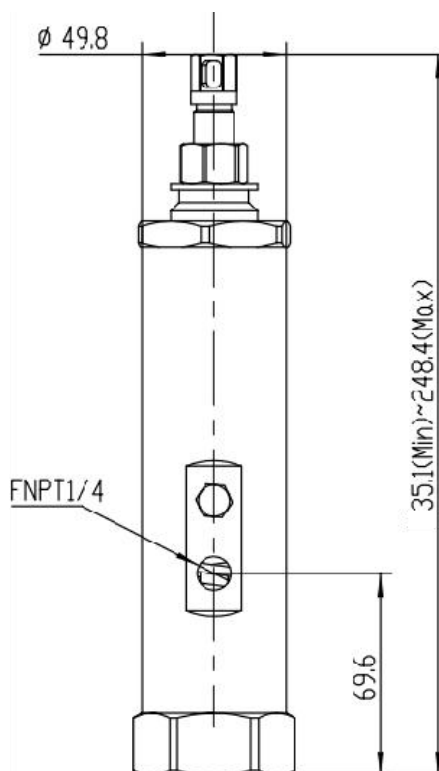
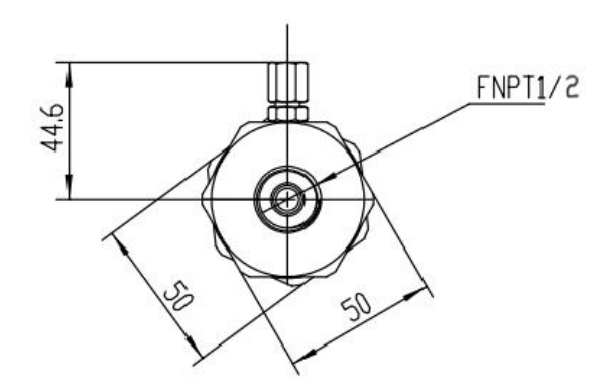
Applications

- Construction machinery
- Mining and mineral processing
- Steel industry



Technical characteristics	
Outlets	1
Metering quantity	0.82 - 8.2 ml (adjustable)
Lubricant	Grease NLGI 0, 1, 2
Operating temperature	-40 ~93 °C
Operating pressure	70 to 240 bar
Material	碳钢 Carbon steel
Connection main line	1/2 NPT (F)
Connection outlet	1/4 NPT (F)

Ordering information of complete set



Part number	Connection outlet
VL1100	1/4 NPT (F)



VL-32

Series Metering Valves

- Shipped with manifolds from 1 to 4 ports to match number of lube points
- Metering quantity adjustable

VL-32 Series Metering Valves



VL-32 Series metering valves has been designed to deliver lubricant to friction points through the feeding line pressure.

These injectors are supplied with visual in-built level indicators to monitoring the operation.

VL-32 Series metering valves is available in different models: from one to four outlets. Every injector mounted on a manifold can be easily replaced or inspected without disassembling the unit or operating on fittings and tubings.

These units can be installed in any position and can be used with other types of injectors, if necessary.

Characteristics

- Shipped with manifolds from 1 to 4 ports to match number of lube points
- Output is externally adjustable
- Indicator stem permits visual check of operation
- Can be removed easily for inspection or replacement

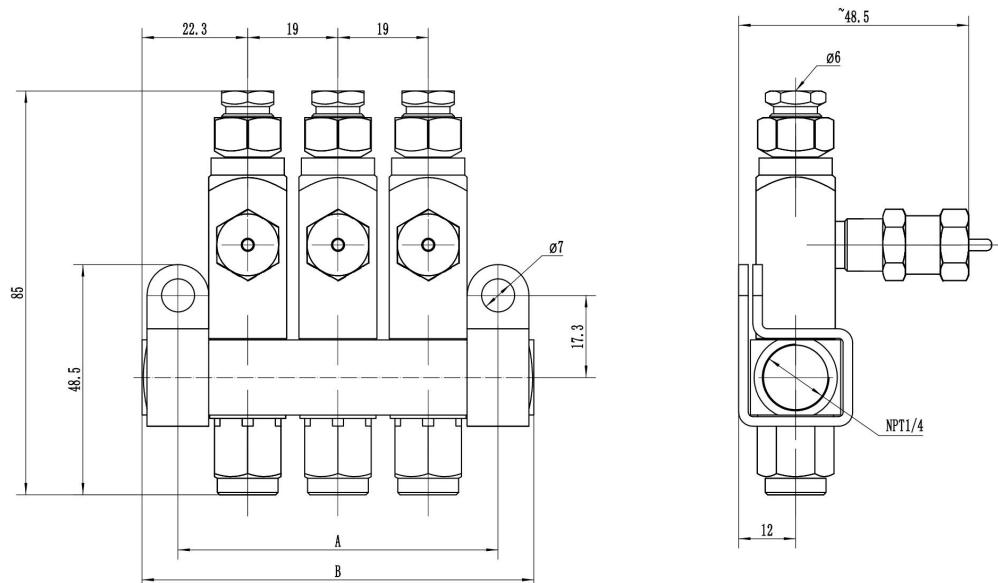
Applications

- Industrial automation
- Food and beverage
- Mobile on-road
- Pulp and paper
- Heavy industry
- Machine tools
- Construction
- Wind energy
- Oil and gas
- Forestry
- Marine

.....

Technical characteristics	
Outlets	1 to 4
Metering quantity	0.016 - 0.131 ml (adjustable)
Lubricant	Grease NLGI 0, 1, 2
Operating temperature	Max. +93 °C; +200 °F
Operating pressure	8.3 to 24 Mpa
Material	Carbon steel
Connection main line	1/4 NPT(F)
Connection outlet	6mm O.D. tube

Dimensions:



Injector	A/mm	B/mm
1 point manifold	28.9	44.4
2 point manifold	48.26	63.5
3 point manifold	67.06	82.5
4 point manifold	86.11	101.6

Ordering information:

Part number	Output Number	Outlet	Inlet
VL3201T	1	6mm O.D. tube	1/4 NPT (F)
VL3202T	2	6mm O.D. tube	1/4 NPT (F)
VL3203T	3	6mm O.D. tube	1/4 NPT (F)
VL3204T	4	6mm O.D. tube	1/4 NPT (F)
VL3200	Ordering information of single metering valve		

MC-III Controller

Can be used in progressive and single-line lubrication systems. Durable, compact housing with small footprint and easy installation. Wiring harness can be connected directly to the controller.

Features

- ▲ With digital display function, can quickly identify the system status
- ▲ LED displays easy-to-identify error codes
- ▲ Alarm tone
- ▲ Small footprint, suitable for use in any vehicle cab
- ▲ Suitable for progressive and single-line lubrication systems

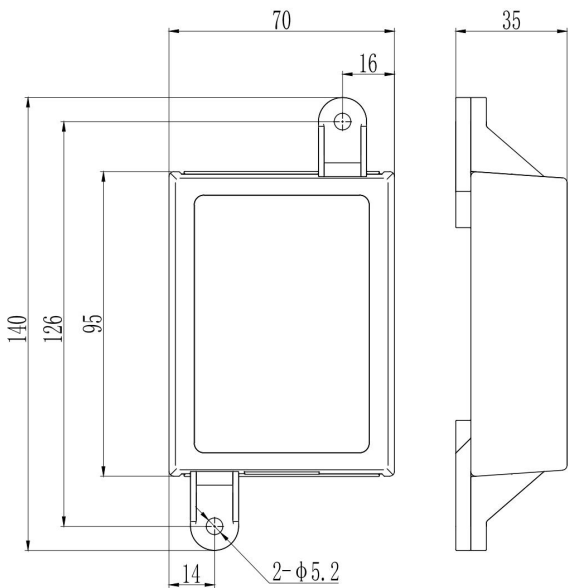
Available inputs

- Pressure/Cycle Switch
- Low level switch

Available outputs

- Pump control signal
- Low level alarm signal
- System normal operation signal

Installation Dimensions (mm)



Model: MC-III

Technical Parameters	
Input contact	
Power Source DC	9 - 30VDC
Power Consumption	1W
Output	
Pump control	Pump Control Voltage = Power Source
Voltage	Pump Control Voltage = Power Source
Maximum Voltage	30VDC
Alarm, Normally Open	
Voltage	Alarm = Power Source
Maximum Voltage	30VDC
Maximum current	2A (DC)
Intrusion Rating	IP54, Indoor and cab use
Shell coating	ABS
Operating temperature range	-40°C to 80°C



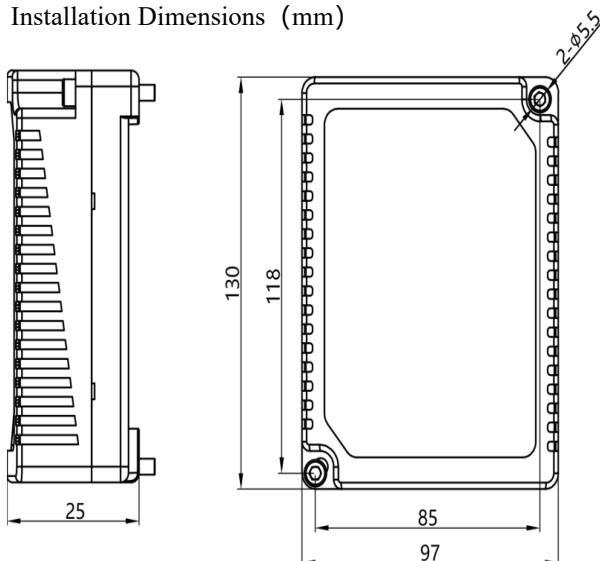
Model: MC-II-A

MC-II-A Controller Can be used in progressive and single-line lubrication systems. Durable, compact housing with digital display for quick identification of system status. Easy to install, the wiring harness can be directly connected to the controller.

Features

- ▲ Integrated, flexible lubrication solutions
- ▲ With digital display function, can quickly identify the system status
- ▲ LED displays easy-to-identify error codes
- ▲ Alarm tone
- ▲ Suitable for use in any vehicle cab
- ▲ Suitable for progressive and single-line lubrication systems

Installation Dimensions (mm)



Technical Parameters

Input contact	
Power Source DC	9 - 30VDC
Power Consumption	1W
Output	
Maximum Voltage	30VDC
Alarm, Normally Open	
Voltage	Alarm = Power Source
Maximum Voltage	30VDC
Maximum current	2A (DC)
Intrusion Rating	IP55, Indoor and cab use
Shell coating	ABS
Operating temperature range	-40°C to 80°C



CisoLube
LUBRICATION SYSTEM

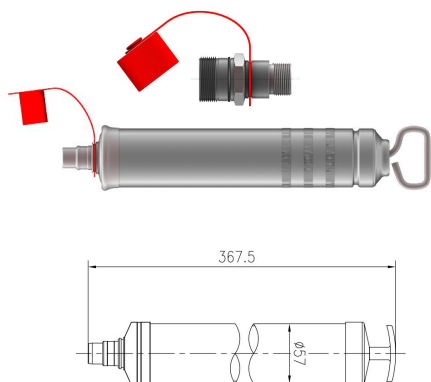
Lubrication parts



SIMPLE SOLUTIONS to
PRECISE LUBRICATION



Follow plate ang grease gun kits:



Description	Part number	Grease fitting
Grease Gun	MG500	-
Grease fitting	MG500-A	Grease fitting without check valve
Grease fitting	MG500-C	Grease fitting with check valve

Description	Part number	Oil drum
Follower Plate	95660C	16KG

Electric lubrication pump accessories:

Pump outlet assembly



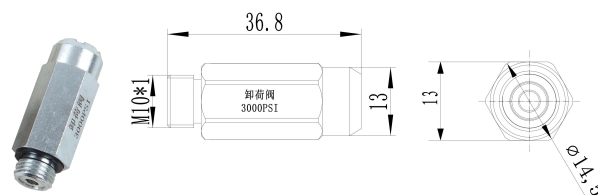
Grease filling connector



Part number	Description	Pressure	OD
80533PG	With pressure gauge	40MPa	6mm
80533PG-8			8mm
80533	Without pressure gauge		6mm
80533-8			8mm

Part number	Description	Thread
80220	Male connector	G1/4
80221	Female connector	G1/4

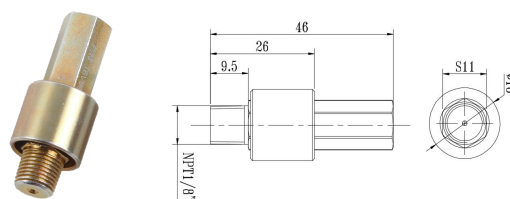
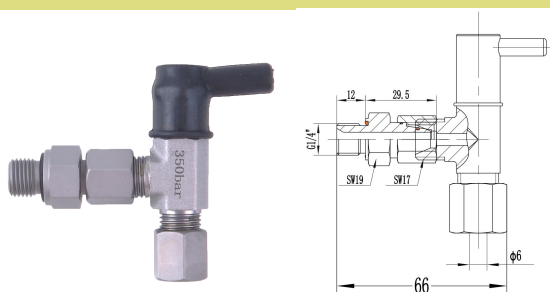
Safety valve



Part number	OD	Rated flow
80536	6mm	A6; 4ml/min
80537	7mm	A7; 5ml/min

Part number	Pressure	Male thread
5FI05	207bar/3000psi	M10*1

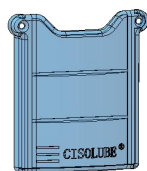
Safety valve



Part number	OD	Male thread	Pressure
5FJ01	φ6	G1/4	345bar/5000psi

Part number	Description	Male thread
5FI07	275bar/4000psi	NPT1/8

Mounting bracket



Description	Part number	Type
PC	97116	GTS

Description	Part number	Type
Mounting bracket	90236	GTS

Button with green lamp



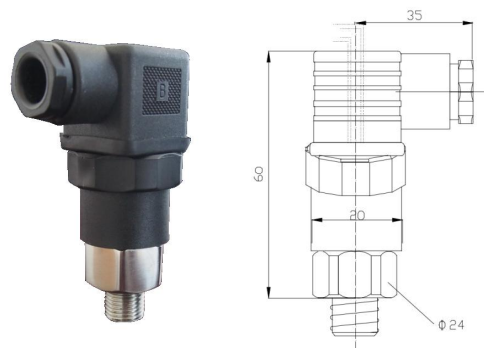
Description	Part number
12V	90212
24V	90224

Cartridge



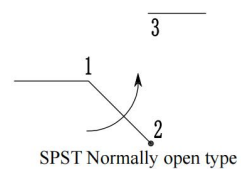
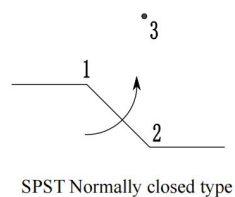
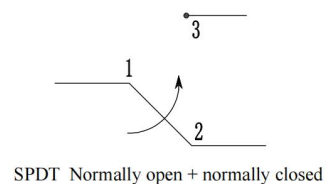
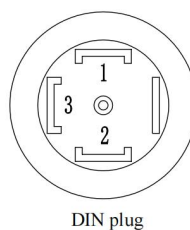
Description	Part number	Reservoir
Cartridge	CSL-J100	700CC
	CSL-C100	700CC

Pressure switch

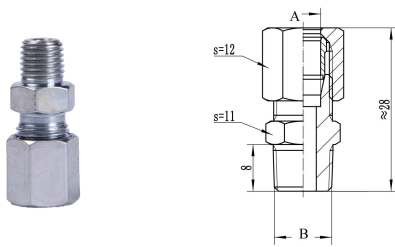


Description	Part number
Adjustable Type	91346

Wiring diagram

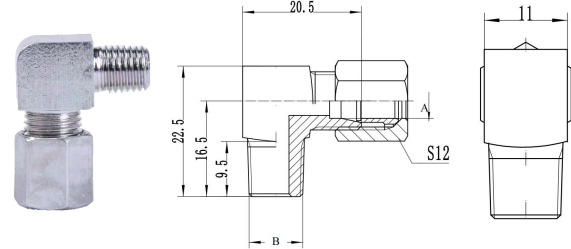


Straight fitting assembly



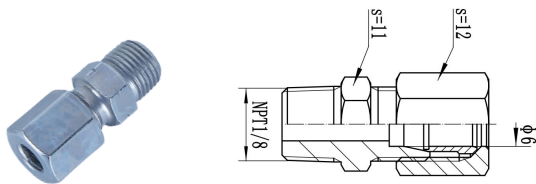
Part number	OD	A	Material
5DM0602	Ø6	R1/8	Carbon steel, galvanized nickel
5DM0610	Ø6	ZM10*1	
5DM0608	Ø6	ZM8*1	
5DM0606	Ø6	ZM6*1	
5DM0402	Ø4	R1/8	
5DM0410	Ø4	ZM10*1	
5DM0408	Ø4	ZM8*1	
5DM0406	Ø4	ZM6*1	

Angle fitting assembly



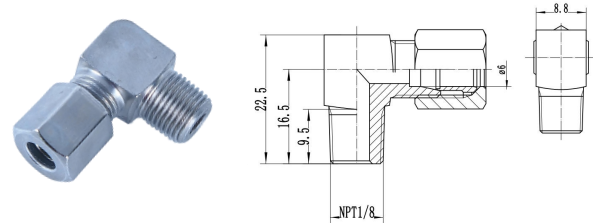
Part number	OD	Thread	Material
5HM0602	Ø6	R1/8	Carbon steel, galvanized nickel
5HM0610	Ø6	M10*1	
5HM0608	Ø6	M8*1	
5HM0606	Ø6	M6*1	
5HM0402	Ø4	R1/8	
5HM0410	Ø4	M10*1	
5HM0408	Ø4	M8*1	
5HM0406	Ø4	M6*1	

Straight fitting assembly



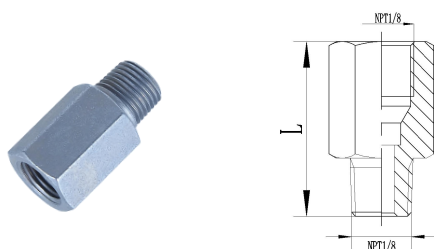
Part number	OD	Thread	Material
5PM0602	Ø6	NPT1/8	Carbon steel, galvanized nickel

90° fitting assembly



Part number	OD	Thread	Material
5NM0602	Ø6	NPT1/8	Carbon steel, galvanized nickel

Straight fitting



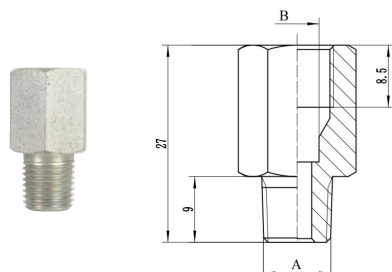
Part number	Thread	Thread	Material	L
5GN02	NPT1/8	NPT1/8	Carbon steel, galvanized nickel	27
5G0202	NPT1/8	NPT1/8		19

Straight fitting



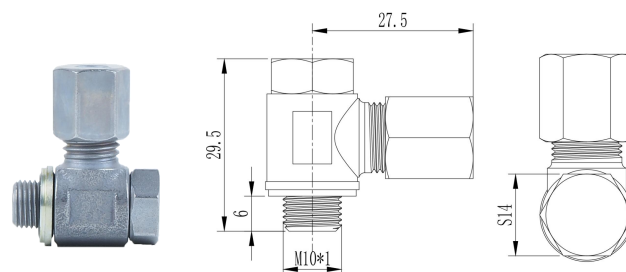
Part number	OD	Thread F	Material
5SF0610	Ø6	M10*1	Carbon steel, galvanized nickel

Straight-through fitting



Part number	Thread M	Thread F	Material
5G0210	R1/8	M10*1	Carbon steel, galvanized nickel
5G0808	M8*1	M8*1	
5G0404	R1/4	R1/4	
5G1010	M10*1	M10*1	

Adjustable fitting

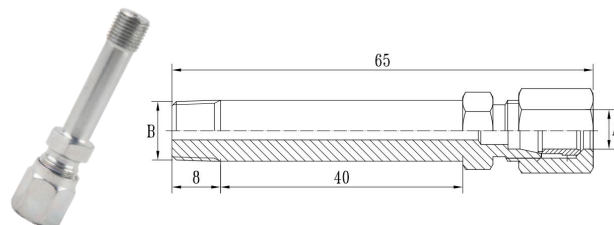


Part number	OD	Thread M
5B0610	Ø6	M10*1

BANJO

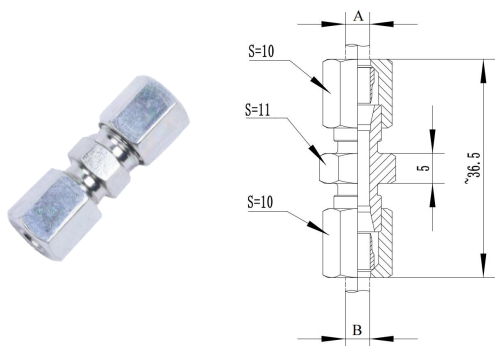


Extension fitting assembly



Part number	OD	Thread M	Material
5C0602	Ø6	R1/8	Zinc Color-plated
5C0610	Ø6	M10*1	

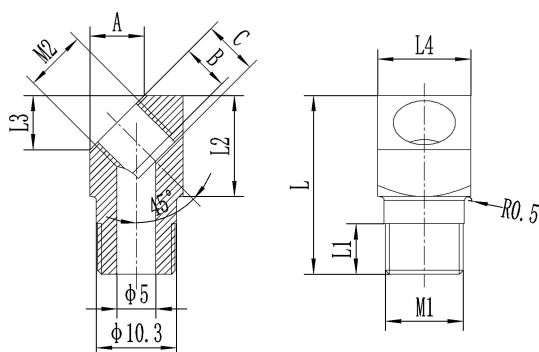
Straight tube-to-tube connectors



Part number	A	B	Material
5KM0602	Ø6	R1/8	Carbon steel, galvanized nickel
5KM0610	Ø6	M10*1	
5KM0608	Ø6	M8*1	
5KM0606	Ø6	M6*1	
5KM0402	Ø4	R1/8	
5KM0410	Ø4	M10*1	
5KM0408	Ø4	M8*1	
5KM0406	Ø4	M6*1	

Part number	A	B	Material
5D0404	Ø4	Ø4	Zinc plated
5D0406	Ø4	Ø6	
5D0606	Ø6	Ø6	
5D0608	Ø6	Ø8	
5D0808	Ø8	Ø8	
5D1010	Ø10	Ø10	

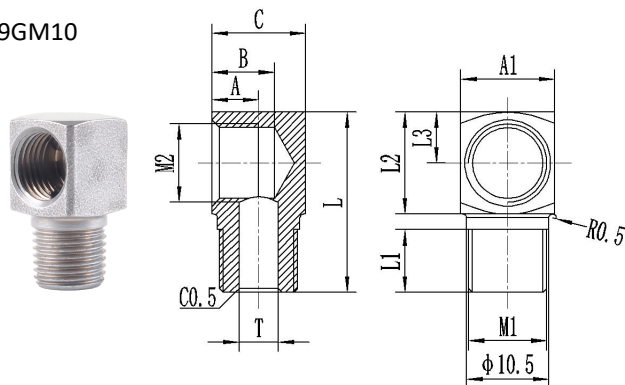
Elbow Connector 45°



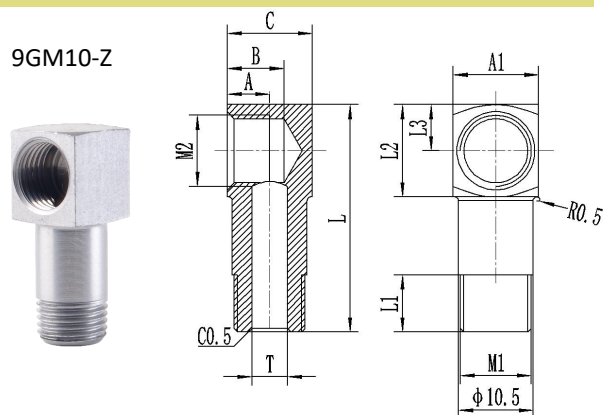
Part number	M1	M2	L	L1	L2	L3	L4	A	B	C
5EM0808	ZM8*1	M8*1	23	6.5	13	7	12	7	6	7
5EM0410	ZM10*1	M8*1	23	6.5	13	7	12	7	6	7
5EM1010	ZM10*1	M10*1	23	6.5	13	7	12	7	6	7
5EM0202	ZG1/8	ZG1/8	23	6.5	13	7	12	7	6	7
5EM0404	ZG1/4	ZG1/4	33	6.5	18	7	12	7	6	7

90° Connector

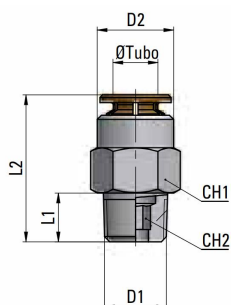
9GM10



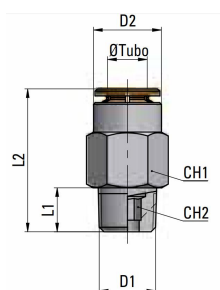
9GM10-Z



Part number	M1	M2	L	L1	L2	L3	A	B	C	A1
9GM0808	ZM8*1	M8*1	23	8	13	6.5	6	8	12	12
9GM1008	ZM10*1	M8*1	23	8	13	6.5	6	8	12	12
9GM10	ZM10*1	M10*1	23	8	13	6.5	6	8	12	12
9GM10-Z	ZM10*1	M10*1	32	8	13	6.5	6	8	12	12
9GM0202	ZG1/8	ZG1/8	23	8	13	6.5	6	8	12	12
9GM0404	ZG1/4	ZG1/4	33	8	18	6.5	6	8	12	17

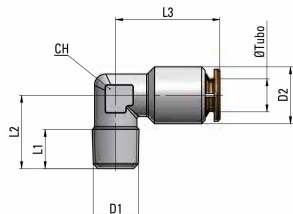
MP11 Taper Straight, Male 10Mpa


Part number	OD	D1	D2	L1	L2
MP110418	Ø4	R1/8	9	7.5	18.5
MP1104M6	Ø4	M6*1.0	9	8	23
MP1104M8	Ø4	M8*1.0	9	8	20
MP1104M10	Ø4	M10*1.0	9	8	20
MP110618	Ø6	R1/8	12	7.5	21.5
MP1106M6	Ø6	M6*1.0	12	8	25.5
MP1106M8	Ø6	M8*1.0	12	8	25.5
MP1106M10	Ø6	M10*1.0	12	8	22

HP11 Taper Straight, Male 25Mpa


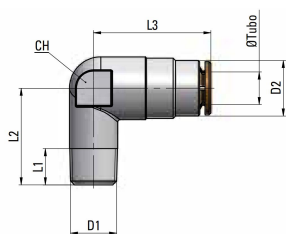
Part number	OD	D1	D2	L1	L2
HP110418	Ø4	R1/8	9.5	7.5	21
HP1104M6	Ø4	M6*1.0	9.5	8	25
HP1104M8	Ø4	M8*1.0	9.5	8	25
HP1104M10	Ø4	M10*1.0	9.5	8	22.5
HP110618	Ø6	R1/8	11.5	7.5	24
HP1106M6	Ø6	M6*1.0	11.5	8	28
HP1106M8	Ø6	M8*1.0	11.5	8	28
HP1106M10	Ø6	M10*1.0	11.5	8	24.5

MP14 Taper Elbow Fitting, Male 10Mpa

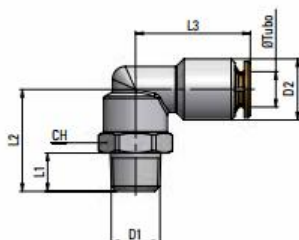


Part number	OD	D1	D2	L1	L2
MP140418	Ø4	R1/8	9	7.5	15.5
MP1404M6	Ø4	M6*1.0	9	8	17
MP1404M8	Ø4	M8*1.0	9	8	17
MP1404M10	Ø4	M10*1.0	9	8	18
MP140618	Ø6	R1/8	12	7.5	15.5
MP1406M6	Ø6	M6*1.0	12	8	17
MP1406M8	Ø6	M8*1.0	12	8	17
MP1406M10	Ø6	M10*1.0	12	8	18

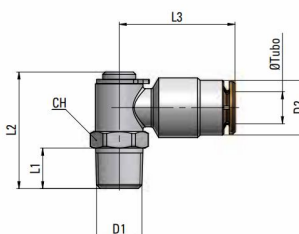
HP14 Taper Elbow Fitting, Male 25Mpa



Part number	OD	D1	D2	L1	L2
HP140418	Ø4	R1/8	9.5	7.5	17
HP1404M6	Ø4	M6*1.0	9.5	8	17
HP1404M8	Ø4	M8*1.0	9.5	8	17
HP1404M10	Ø4	M10*1.0	9.5	8	18
HP140618	Ø6	R1/8	11.5	7.5	20
HP1406M6	Ø6	M6*1.0	11.5	8	20
HP1406M8	Ø6	M8*1.0	11.5	8	20
HP1406M10	Ø6	M10*1.0	11.5	8	21

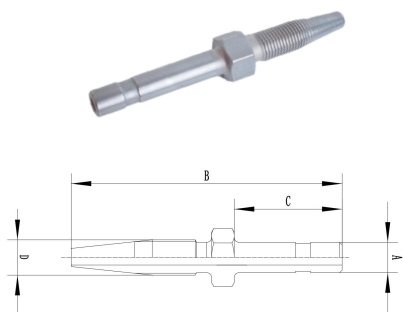
MP15 Taper Elbow Fitting, Male, Rotatable 10Mpa


Part number	OD	D1	D2	L1	L2
MP150418	Ø4	R1/8"	9	7.5	20
MP1504M6	Ø4	M6*1.0	9	8	20.5
MP1504M8	Ø4	M8*1.0	9	8	20.5
MP1504M10	Ø4	M10*1.0	9	8	20.5
MP150618	Ø6	R1/8"	12	7.5	20
MP1506M6	Ø6	M6*1.0	12	8	21.5
MP1506M8	Ø6	M8*1.0	12	8	21.5
MP1506M10	Ø6	M10*1.0	12	8	21.5

HP18 Taper Elbow Fitting, Male, Rotatable 25Mpa


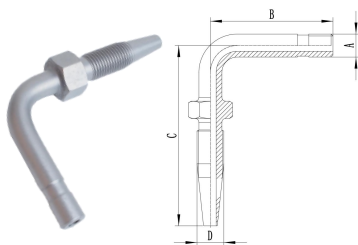
Part number	OD	D1	D2	L1	L2
HP180418	Ø4	R1/8"	9.5	8.5	22
HP1804M6-1	Ø4	M6*0.75	9.5	6	22
HP1804M6	Ø4	M6*1	9.5	8	22
HP1804M8	Ø4	M8*1	9.5	8	22
HP1804M10	Ø4	M10*1	9.5	8	22
HP180618	Ø6	R1/8"	11.5	8.5	24
HP180614	Ø6	R1/4"	11.5	11	24
HP1806M6	Ø6	M6*1	11.5	8	24
HP1806M8	Ø6	M8*1	11.5	8	24
HP1806M10	Ø6	M10*1	11.5	8	24

Hose coupling straight



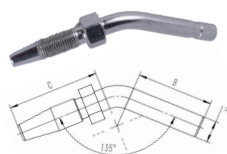
Part number	A	B	C	D	Material
ZZ06	Ø6	60	30	M7*1	Carbon steel, galvanized nickel
ZZ06-1 (Short)	Ø6	54.5	21.5	M7*1	
ZZ0610	Ø6	63	30	M10*1	
ZZ08	Ø8	63	30	M10*1	

Hose coupling bent



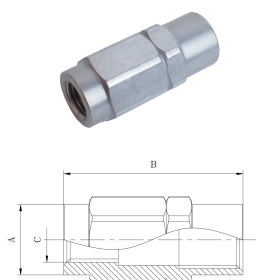
Part number	A	B	C	D	Material
WZ06	Ø6	32	45	M7*1	Carbon steel, galvanized nickel
WZ0610	Ø6	32	45	M10*1	
WZ06-1(Short)	Ø6	20	45	M7*1	
WZ08	Ø8	35	50	M10*1	

135°Hose coupling bent



Part number	OD	B	C	D	Material
WZ13506	Ø6	30	36	M7*1	Carbon steel, galvanized nickel

Threaded sleeve



Part number	OD	A	B	C	Material
WO06	Ø6	Ø11	28	M7*1	Carbon steel, galvanized nickel
WO08	Ø8	Ø14	28	M10*1	

Nuts

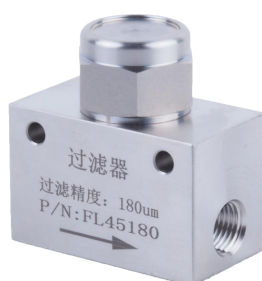


Ferrule



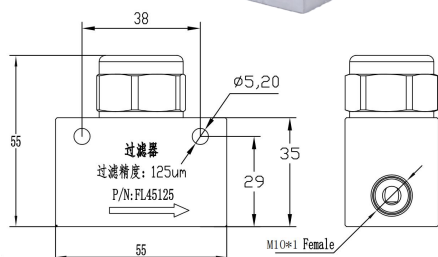
Part number	Thread	TUBE O.D.	MPa	Part number	TUBE O.D.	MPa
NLL-08	M8*1	Ø4	Super light series LL	RLL-04	Ø4	Super light series LL
NLL-10	M10*1	Ø6		RLL-06	Ø6	
NL-12	M12*1.5	Ø6	Light series L	RL-06	Ø6	Light series L
NL-14	M14*1.5	Ø8		RL-08	Ø8	
NL-16	M16*1.5	Ø10		RL-10	Ø10	
NL-18	M18*1.5	Ø12		RL-12	Ø12	

Inset filter:

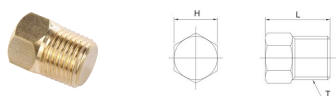


Part number	Rate	Thread F	Material
AL45180	180µm	M10*1	AL
AL45125	125µm	M10*1	

To order filters with other rate, please contact your sales manager.

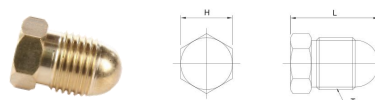


Plane-end plug



Part number	L	T	H
3G0408	12	M8*1.0	8
3G0601	14	PT1/8"	10

Sleeve plug



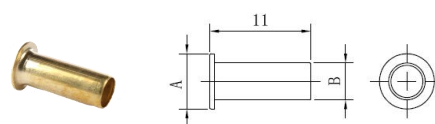
Part number	L	T	H
3G04	16	M8*1.0	8
3G06	17	M10*1.0	10

Straight Fitting assembly



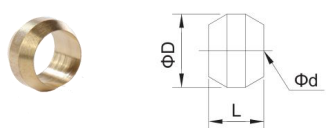
Part number	OD	Thread
3D0410T	Ø4	M10*1
3D0610T	Ø6	M10*1
3D0408T	Ø4	M8*1.0
3D0406T	Ø4	M6*1.0

Inner screw of pipe



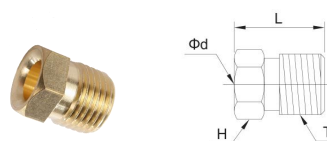
Part number	A	B
BF04	4	2
BF0425	4	2.5
BF06	6	4
BF0630	6	3

Sleeve



Part number	OD	Ød	ØD	L
3B04	4	4.1	6	4.5
3B06	6	6.1	8	5
3B08	8	8.1	11	7
3B10	10	10.1	13.5	8

Sleeve cap



Part number	OD	Ød	L	H	T
3A04	4	4.1	12	8	M8*1.0
3A06	6	6.1	12.5	10	M10*1.0
3A08	8	8.1	14	14	M14*1.5
3A10	10	10.1	15	16	M16*1.5

High-pressure flexible pipe



Part number	Outer diameter	Inside diameter
T-HP03	Ø6	Ø3
T-HP04	Ø8.6	Ø4
T-HP06	Ø11	Ø6.3

Nylon tubing (BP in black; WP in white)



Part number	Outer diameter	Inside diameter
T-BP06	Ø6	Ø3
T-BP04	Ø4	Ø2.5
T-WP06	Ø6	Ø4
T-WP04	Ø4	Ø2

Steel tubing



Part number	Outer diameter	Inside diameter
T-CP04	Ø4	Ø2
T-CP06	Ø6	Ø4
T-CP08	Ø8	Ø6
T-CP10	Ø10	Ø8

Spring coil



Part number	Ød	Suitable pipe outer diameter
THT04	4.5	4
THT06	6.5	6
THT08	11	9.3

Falt hose plastic jacket



Part number	Ød	Suitable pipe outer diameter
THL08-1	8	6
THL10-1	10	8.6
THL12-1	12	11.2

Cable tie



Part number	Width	Length	Material
ZDCH5200	5	200	Nylon
ZDCH5300	5	300	
ZDCH5500	5	500	

R Pipe clamp



Part number	Ød	Mounting hole
RC06	6	6.4mm
RC08	8	6.4mm
RC10	10	6.4mm
RC12	12	6.4mm
RC14	14	6.4mm
RC16	16	6.4mm
RC18	18	6.4mm
RC20	20	6.4mm
RC22	22	6.4mm
RC25	25	6.4mm
RC28	28	6.4mm
RC30	30	6.4mm



Yantai Ciso Lubrication Technology Co.,Ltd

40 Bosina Road, High-tech Zone, Yantai, Shandong, China

Tel : +086 400-800-9400

Email: info@cisolube.com

